



JAPANESE BEETLE

Japanese beetle has a large host range of approximately 300 different species of plants. In the Metro-Detroit area you will see them on crabapples, roses, lindens, cultivars of maples, wild grape, and the list goes on. You will start seeing these beetles feeding in late June and throughout July. The adults will feed in groups and skeletonize the leaves. As shown in the picture below.

- The larvae of Japanese beetle can also damage the root system of lawns, they are otherwise known as grubs.
- To check for grubs in your lawn, carefully pull back the sod in suspect areas. Usually a population of about 10 or more grubs per square foot will lead to browning of the lawn.

These beetles can be found in high populations if you live near a golf course, or a natural wooded area. If you are seeing these beetles call now to get your plants treated. You may also need us to check the condition of the lawn to make sure the grubs are not damaging the roots.

Typical white grub; arrow at raster. Rastral patterns are used to ID grubs.



Japanese beetle adults can be confused with the false Japanese beetle (*Strigoderma arboricola*) and rose chafers. Although all three have copper colored wing covers, only Japanese beetle has tufts of white hairs along the outer edge of the abdomen.

Managing Chlorosis

During the summer months you may start to notice chlorosis occurring on one or more of your trees. Trees that experience chlorosis exhibit yellow leaves and suffer with low vigor, slow, stunted growth and less seed/fruit production. In Michigan landscapes we mainly encounter iron chlorosis of pin oaks and manganese chlorosis of red Maples. These micronutrients are needed in very small amounts by plants. They can become unavailable to plants if the soil has a high pH, which is very typical of our alkaline Michigan soils. When manganese becomes un-



Photo 1



Photo 2

available to a red maple it will cause interveinal yellowing symptoms on the leaves (see photo 1). Other maples are usually not as affected by high soil pH. When iron becomes unavailable to a pin oak it will cause severe yellowing and necrotic spots between leaf veins (see photo 2). Lack of iron in a pin oak may even cause severe branch die-back. Other species of oaks are not as affected by high soil pH.

Both iron and manganese chlorosis can be a very difficult problem to correct. We have had some success with iron or manganese trunk injections. Vertical mulching and specialized soil fertilization and amendments. If you are in need of a diagnosis please call us today.

Trim Spring Flowering Trees and Shrubs NOW!

Most of Michigan's finest spring flowering trees and shrubs have finished flowering for the year. For the most part, it was a spectacular show! Most of these trees and shrubs will also start developing next year's flower buds this summer. This is why it's important to trim these plants soon, so they have all summer to grow and set buds for next seasons show! Trimming these at the wrong time, such as fall or next spring, will result in a disappointing flower show next year because you inadvertently **cut off** the flower buds when trimming! Don't trust your valuable trimming needs to your lawn cutting or landscape folks! If you're not sure whether trees and shrubs set flower buds on this years OR last years growth give us a call, we can assess and trim at the proper time for you!



"An Ounce of Prevention"

TRIMMING CAN PREVENT STORM DAMAGE!

Summer has arrived, and we've already had our share of windy, stormy days and nights. At the very least, we'll have to pick up branches and twigs from our landscapes after one of these storms. Conversely, some of our more "unfortunate" trees will suffer more significant damage during one of these events. Are you aware that some trees are inherently weak wooded or have poor structure, making them more susceptible to damage during inclement weather. Remember the old adage, "an ounce of prevention is worth a pound of cure?" This adage also applies to pro-actively trimming trees to help reduce their storm damage potential! Flowering pears (such as Bradford) are an example of a species of tree that can benefit from trimming now. Calling us now for preventative trimming may save your tree (and pocketbook) from significant storm damage cleanup later.



Mulch

Correctly applied mulch is a great investment for your landscape. Now is a great time to install mulch. Maintaining a 2-3" layer of mulch will help conserve ground moisture, prevent weeds, buffer soil temperature, protect the trunks of trees, improve soil structure and enhance soil fertility. Unfortunately, improperly applied or excessive amounts of mulch can be worse than no mulch at all! Have you seen the dreaded "mulch volcano" in your neighborhood?!? Please do your part to help educate the public to stop this unhealthy practice! The area directly underneath the base of trees and shrubs needs to be clear of mulch so they can breathe air and not be in contact with the bacteria and fungi present in the wooden mulch. Here are some simple guidelines to remember so you can

properly apply the correct amount of mulch around your trees and shrubs:

- A layer of approximately 3" is generally a good depth
- Don't let mulch "build up" over the years
- It's OK to "turn over" layers of old mulch to let air in
- NEVER pile up mulch against the base of tree trunks
- ALWAYS keep mulch 4" - 6" away from the trunks of trees and shrubs

If you'd like to have us properly install a fresh layer of high quality mulch call us today for a free estimate.



No mulch volcanoes!

Mulch wide, not tall.



263 Park St., Troy, MI 48083-2726
 (248)588-0202 • Fax (248)588-4824
 www.mikestree.com



We are proud members of the following organizations:

- International Society of Arboriculture (ISA)
- Global Relief of Michigan
- Tree Care Industry Association (TCIA)
- Michigan Green Industry Association (MGIA)
- Arboriculture Society of Michigan (ASM)

PRSRT STD
 U.S. Postage
 PAID
 Permit #533
 Royal Oak, MI



Printed on recycled paper

Summer 2009

Needles & Nuts

"Mike's Tree Surgeons, Inc. manages landscapes using the highest ethical standards. Our long-term commitment to education and communication inspires us to perform at a level that is unequalled. We are professionals dedicated to protecting and enhancing the landscapes entrusted to our care."

Need to schedule an appointment with your certified arborist?

By visiting Mike's Tree Surgeon's www.mikestree.com and using the Contact Us feature as show below, you can let us know about your tree, shrub and lawn care concerns. An arborist will call you within 1-2 business days to schedule an appointment with you. We look forward to caring for your property!

We also have revamped our answer center feature. Keeping you informed of changes in our industry, environment, and those we make as a company, has always been our goal so that we may provide you with better results. In the answer center is updated information on the laws that regulate pesticide applications, new insect and/or disease issues, and new products we are using.

www.mikestree.com



Thank You For Your Business!

A Few Words From Some of Mike's Satisfied Customers:

"Thanks, Mike, for the great job and good price!"

Elizabeth - Huntington Woods

"Rachel was great and she went above and beyond her duty, while out for our Austrian pine treatment. We would trust her with anything."

Elizabeth - Rochester Hills

"Great job - great tree crew and I feel lucky to have called your company. Thanks again for your service."

Ralph - Royal Oak

"I appreciate the fact that your company always helps me to take the most environmentally friendly approach to treating my trees, shrubs and my lawn and my yard looks great."

Brian - Birmingham

Did You Know We Do...

TREE CARE

Tree & Shrub Pruning, Tree & Stump Removal, Cabling & Bracing, Lightning Protection

PLANT HEALTH CARE

Insect & Disease Management, Tree & Shrub Fertilization, Macro & Micro Trunk Injections

BIO-TURF LAWN CARE

Custom Fertilization Programs, Selective Weed Control, Core Aeration & Lawn Renovation

FORESTRY

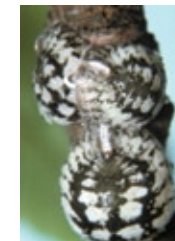
Woodland Inventories & Inspections, Street Tree & Park Inventories, Tree Preservation Programs

Visit Our Website: www.mikestree.com

Are Your Trees Raining Honeydew?

Lecanium and Calico scale have become quite a problem in the Metro-Detroit area. Several species of deciduous trees are infested with very high populations of these scale. If you have a scale problem, you are experiencing honeydew showering down on your sidewalks, driveways, cars, and shrubs. This is a frustrating problem, but it should soon end by mid-June. Black sooty mold will grow on the honeydew as it is hard to miss.

- Different types of scale have spaced out hatching times. One application will not resolve the issue, since treatments depend on specific developmental stages of the pest.



Calico Scale
 Photo property of <http://www.forestryimages.org>

In the past scale populations have been kept in check by natural predators, parasites and cold winter weather. Lately, the outbreak and populations of scale has exploded into a much worse scenario. This is due to landscapes being treated for other reasons. When landscapes are sprayed for other reasons it can kill the predators and parasites that help keep scale under control. There are different treatment methods to take advantage of. Methods include treating with an insecticide, treating with horticultural oil, treating with an insect growth regulator, a trunk injection and/or a soil injection. A combination of treatment methods

is the most effective in controlling scale. It is a very difficult insect to control and can take 2-3 seasons before you see significant results.

- Look into a combination of treatments to control the scale outbreak.

If you are experiencing a scale problem on any of your trees please call today and we can arrange a treatment program to get your scale problem under control. We are treating for scale now throughout the summer and fall. You can find more information regarding scale on our website at www.mikestree.com, just click on the answer center feature at the top right corner of the screen and you will find articles regarding Lecanium and Calico scale.

Other scale insects to watch out for;

- Euonymus scale
- Magnolia scale
- White Punicola scale
- Pine needle scale
- Fletcher scale
- Juniper scale
- Oystershell scale
- Cottony Maple scale
- Lecanium scale



Lecanium Scale
 Photo property of www.branchoutburlington.org/pests/lecaniumscale